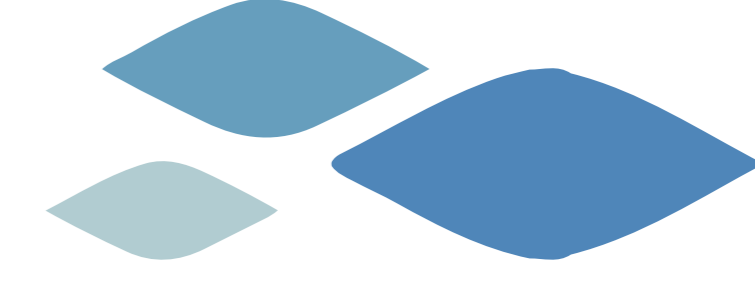


How did Jantzen Handle Delivery and Production of Bottle Water procedures

DELIVERY PART

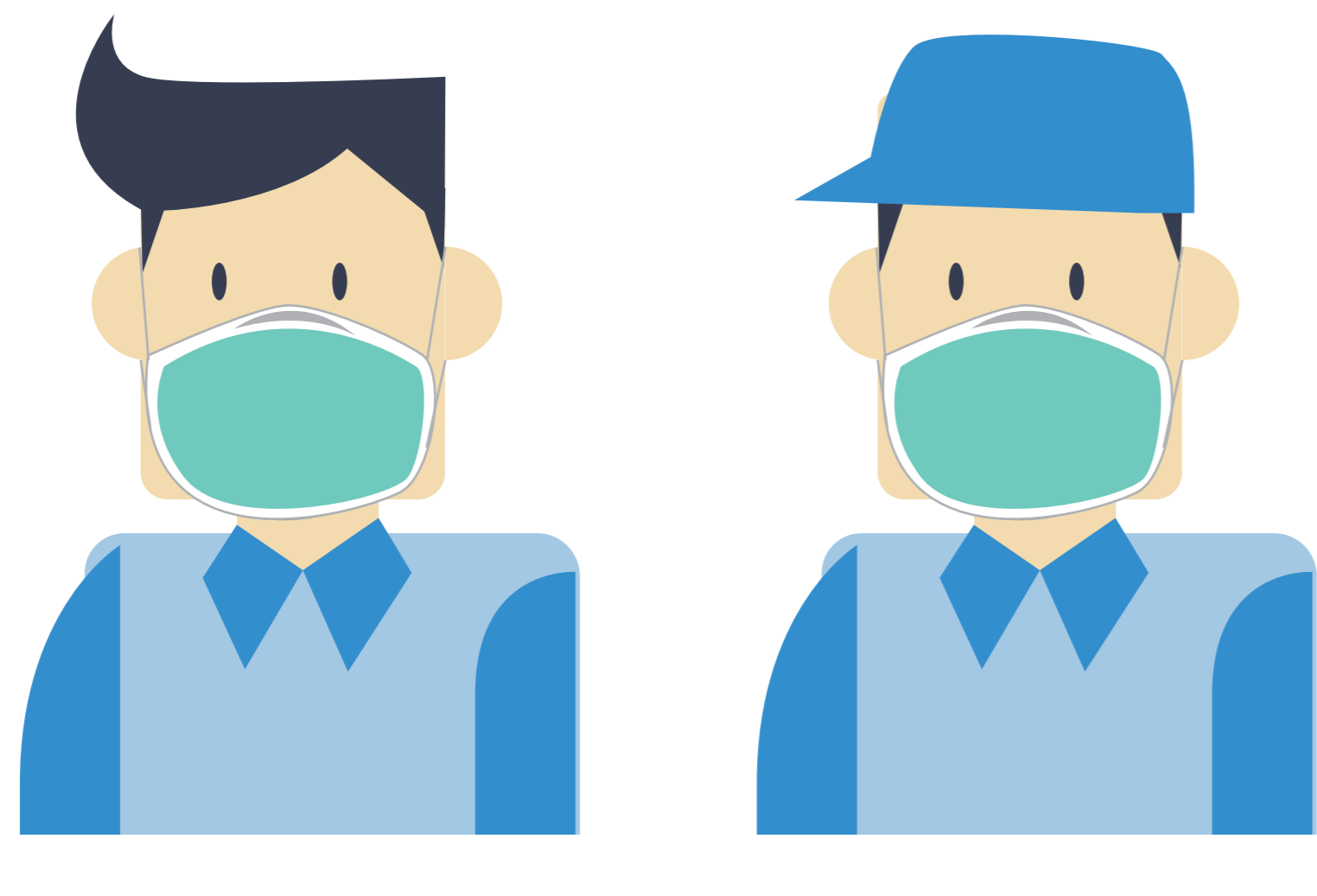


Step 1:

ALL STAFF MEMBERS THAT ENTER THE PREMISES WILL NEED TO CHECK BODY TEMPERATURE TO ENSURE NOT EXCEED 37.5C BEFORE START JOB



WEAR MASKS AND SANITIZE HAND BEFORE ENTERING FACTORY AND OUT FOR DELIVERY.



Step 2:

DRIVERS AND ASSISTANTS ARE REQUIRED TO WEAR MASK ALL THE TIME DURING DUTY.



Step 3:

EACH DELIVERY TEAM WILL BE PROVIDED WITH HAND SANITIZER, THEY WILL BE REQUIRED TO SANITIZE THEIR HAND AFTER EACH DELIVERY.



Step 4:

AFTER DELIVERY, WHOLE LORRY WILL BE DISINFECTANT INTERIOR AND EXTERIOR.



Step 5:

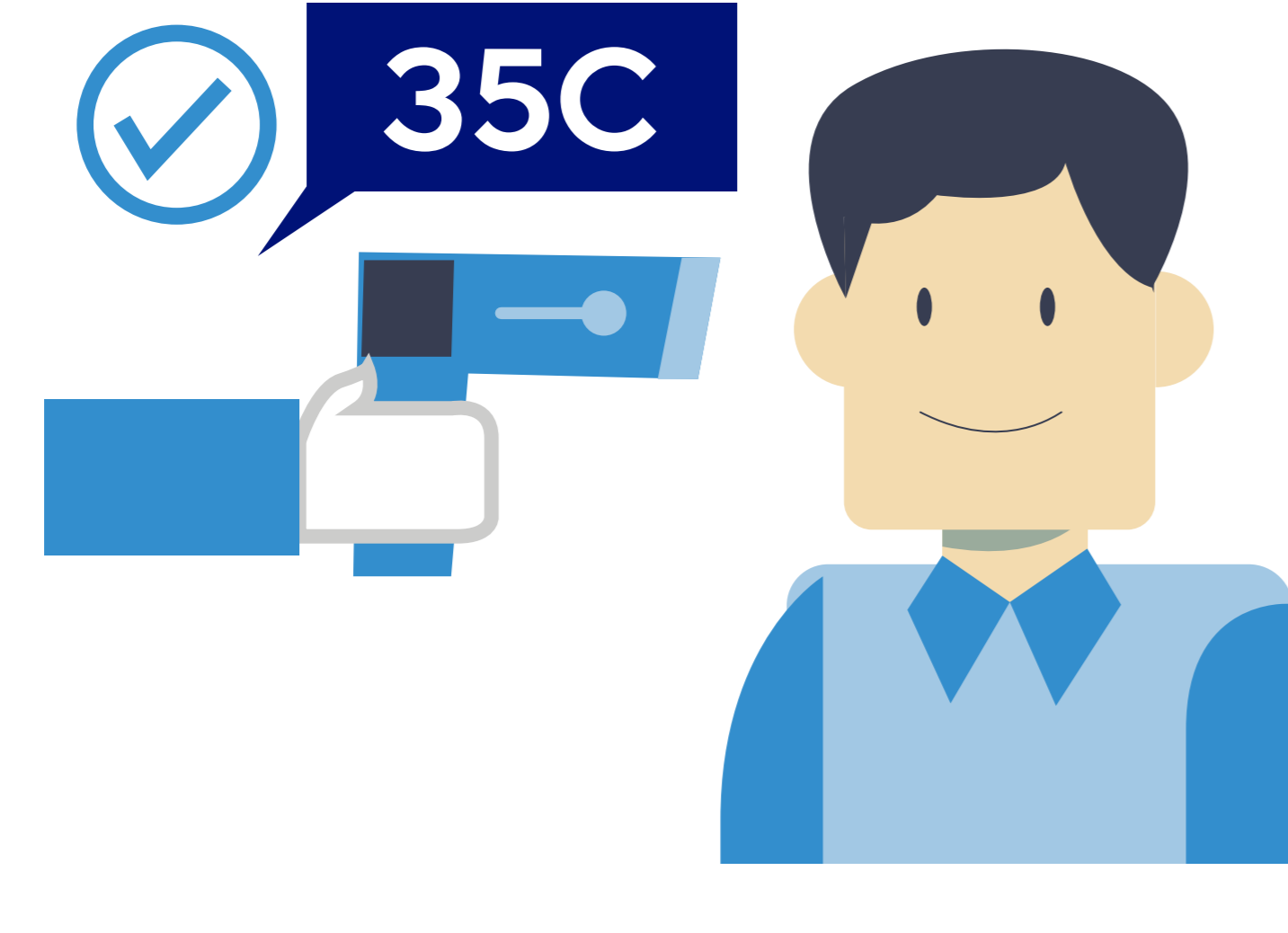
DRIVER WILL UPLOAD NEXT DAY DELIVERY PRODUCTS TO THE LORRY.



Step 6:

AFTER FINISHED ALL UPLOADING PROCESS, OUR WAREHOUSE TEAM WILL SANITIZE THE FORKLIFT AND WAREHOUSE COMMON AREA.

PRODUCTION PART



Step 1:

DAILY BODY TEMPERATURE MEASURE ENSURE NOT EXCEED 37.5C BEFORE WORK.



Step 2:

PRODUCTION TEAM WILL BE EQUIPPED WITH HAND GLOVE, HAIR NET AND MASK.



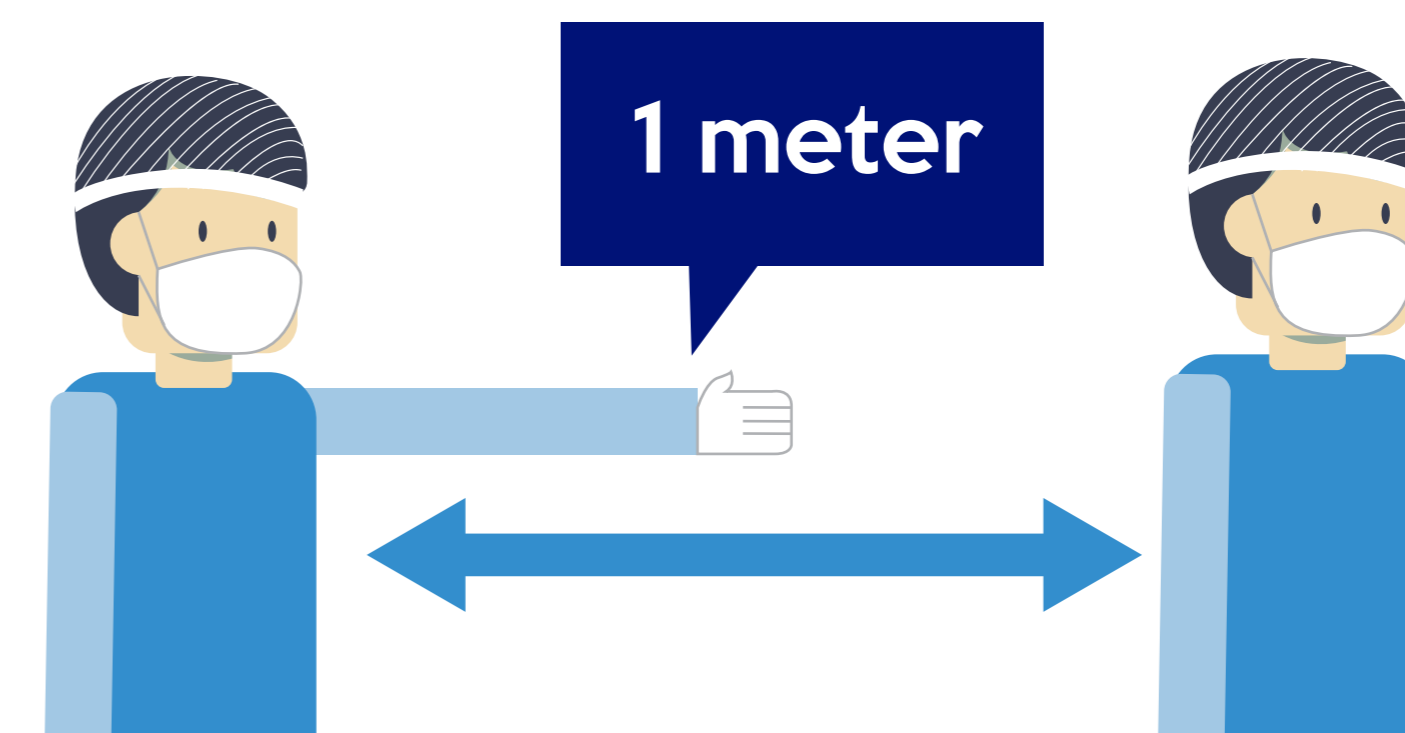
Step 3:

BEFORE ENTERING PRODUCTION FLOOR, DISINFECTANT OF WHOLE BODY WILL BE DONE.



Step 4:

SOCIAL DISTANCING IN PRODUCTION WILL BE IMPLEMENTED.



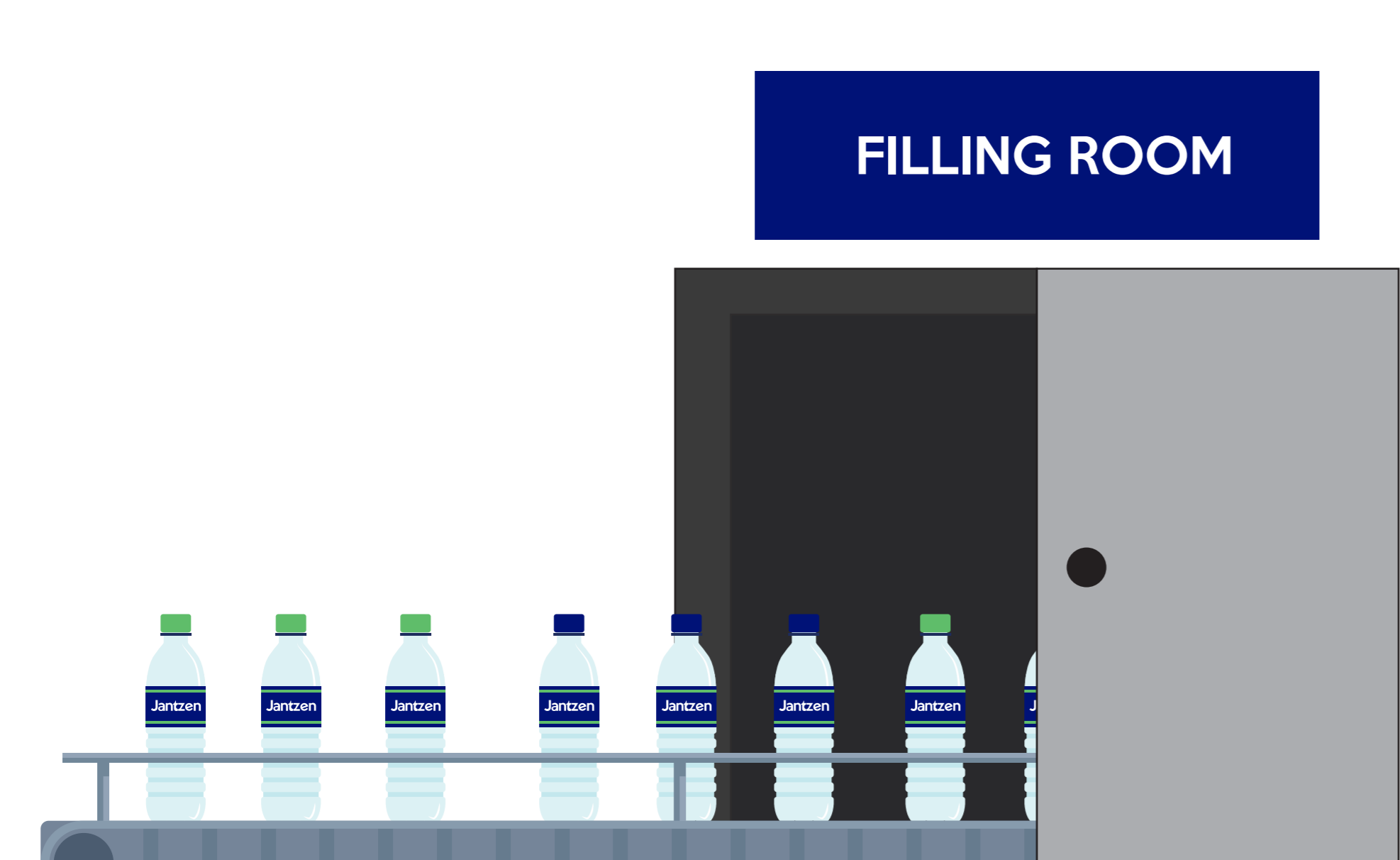
Step 5:

DURING THE PROCESS OF PRODUCTION OPERATING, EACH PRODUCTION MEMBER WILL BE 1 METER DISTANCE AWAY FROM EACH OTHER.



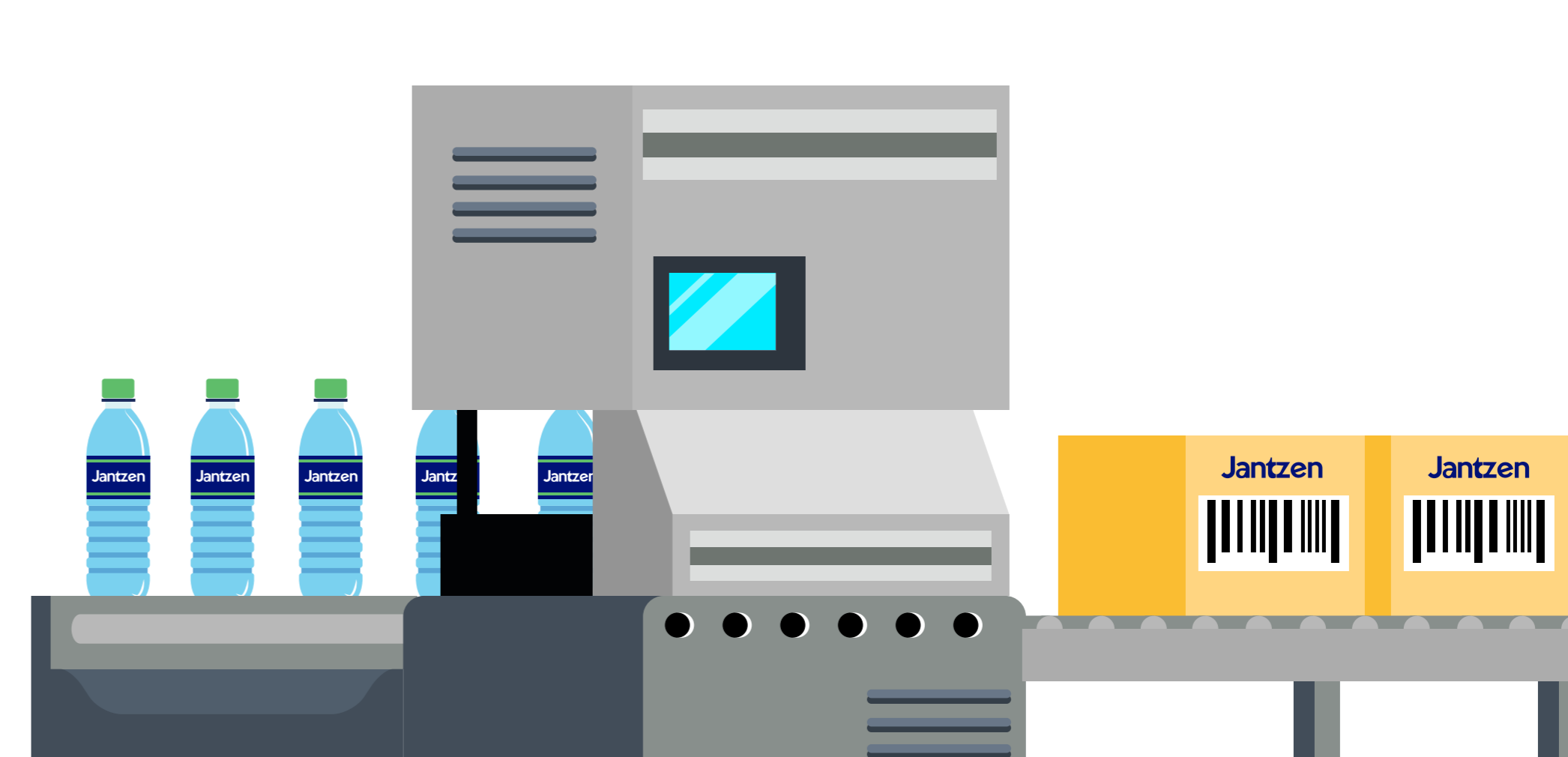
Step 6:

OZONE TREATMENTS IS USE TO DISINFECT ALL THE BOTTLING EQUIPMENT, BOTTLE WATER AND SEAL CAP. SO THAT TO ENSURE THE PRODUCT THAT WE PRODUCE ALWAYS REMAIN HYGIENE AND SAFE TO CONSUME.



Step 7:

EMPTY BOTTLE WATER WILL BE TRANSPORTED TO FILLING ROOM, WHICH ONLY AUTHORIZED PRODUCTION WORKERS, CAN ENTER THE ROOM.



Step 8:

AFTER WATER BOTTLED IS FILLED, IT WILL BE PACKED INTO CARTON BOXES BY MACHINES.

Step 9:

DAILY CLEANING AND SANITIZATION WILL BE CARRY OUT BY PRODUCTION WORKER AFTER EACH PRODUCT PRODUCTION COMPLETED.

